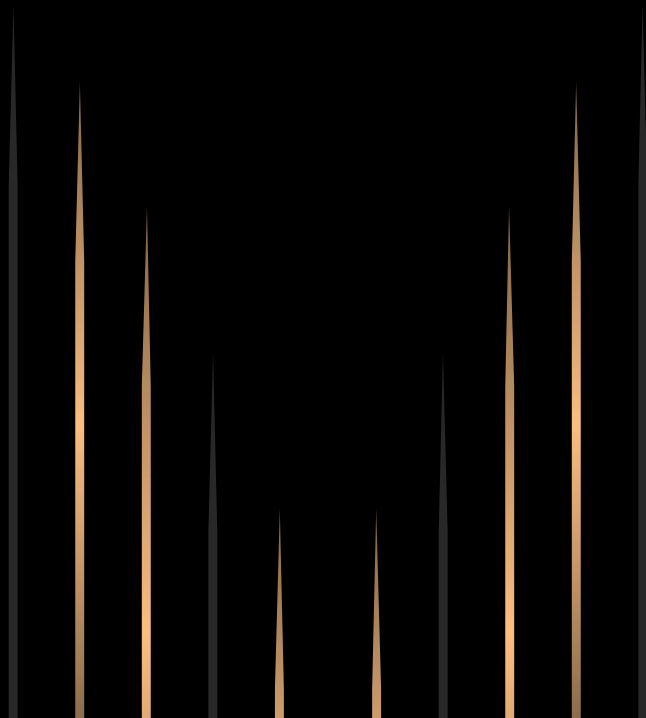


BURJ BINGHATTI  
JACOB & CO  
R E S I D E N C E S



An Iconic Skyscraper Sets  
to Break a World Record

BINGHATTI | JACOB&CO

An Astounding Luxury  
Design and Architectural Feat





Inspired by  
the Impossible







TABLE OF CONTENTS

01.

About the  
Project

02.

Design  
Details

03.

Burj Binghatti  
Jacob & Co  
Residences

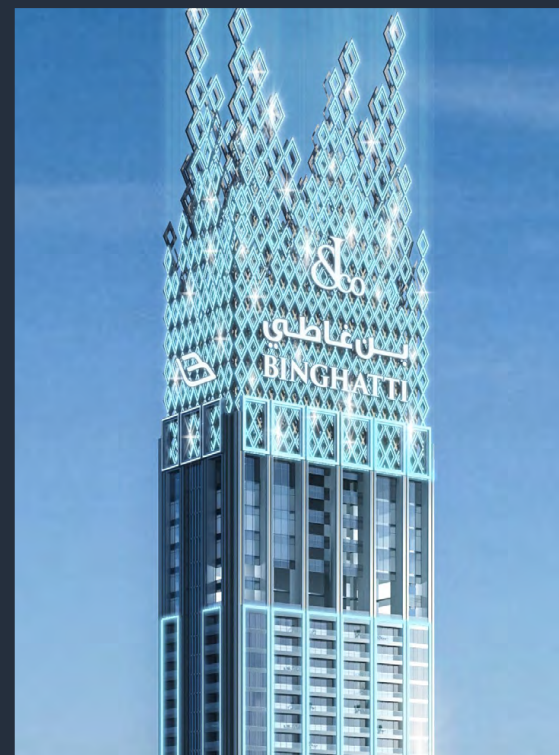


## Live Amidst the Clouds

Imagine living amidst the clouds at the peak of one of the tallest hypertowers in the world. Break boundaries, and challenge the unthinkable, Burj Bingham Jacob & Co Residences utterly redefines the notion of a luxuriant contemporary lifestyle in the metropolis, offering impeccable, high-end bespoke living exclusively fashioned for the elite.

DESIGN CONCEPT

# The Clouds



BINGHATTI | JACOB&CO



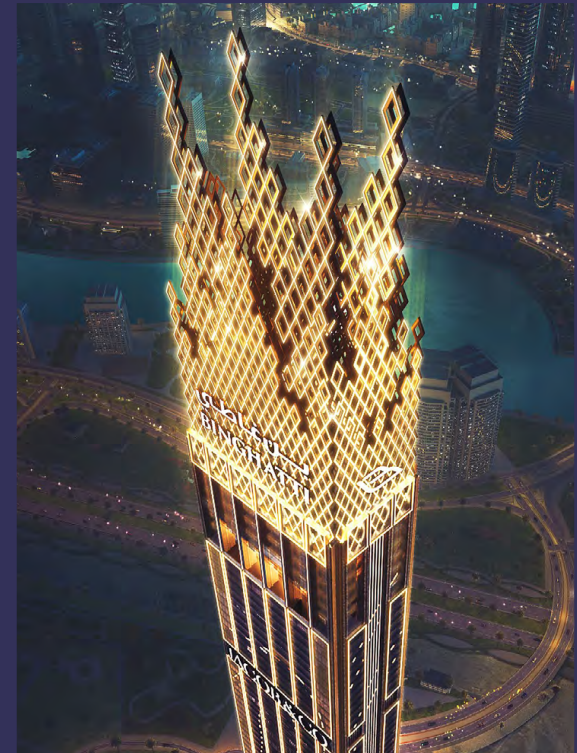
## Horology and Watchmaking by High Jewelry Setting

The amalgamation of ingenuity and refinement are the hallmarks of this groundbreaking architectural masterpiece. Featuring stylized elements and dimensions found in Jacob & Co's scrupulous watchmaking process that are both highly aesthetic and constructive. The hypertower has gone beyond remarkable architectural and horological achievements, full of unparalleled pioneering technological solutions and adorned with incomparable finishing techniques inspired by Jacob & Co's horological and design philosophy.



DESIGN CONCEPT

# The Gems



BINGHATTI | JACOB&CO



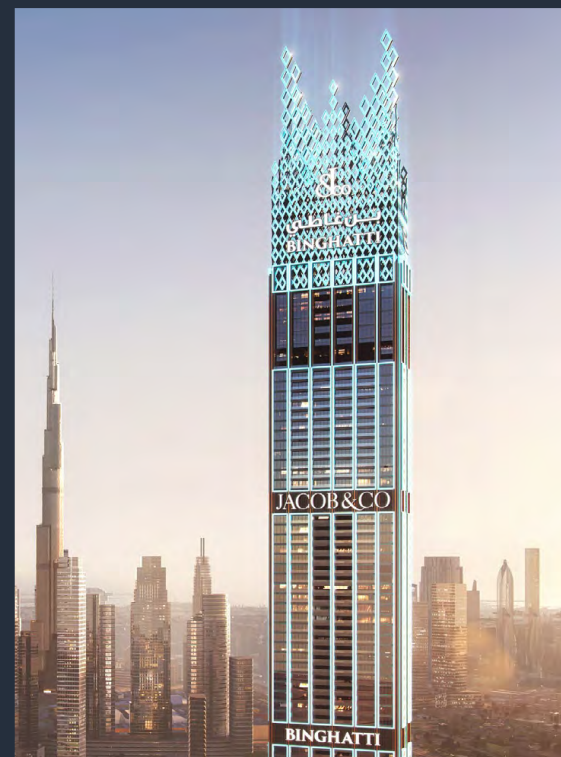
## Unrivalled Opulence

The crown stands as the culmination of the Bingham and Jacob & Co signature architectural and horological code, the emblem and purest representation of the brands. The crown is found at the highest altitude of the hypertower illuminating unrivalled opulence with its voluptuous and fascinating constructive display of the iconic and signature Jacob diamonds.



DESIGN CONCEPT

# Intricate Artistry



BINGHATTI | JACOB&CO



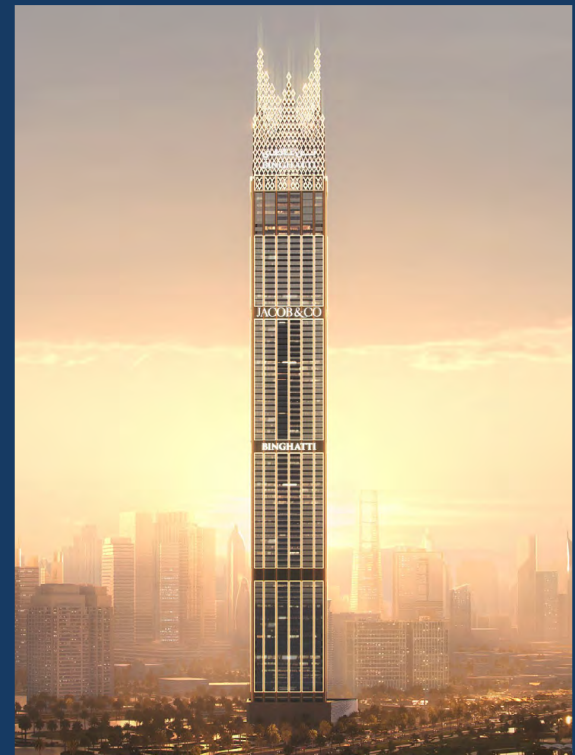


## Inspired by the Impossible

Brimming with radical and profound ideas, breaking new ground in high-end architectural and horological spheres, Bingham and Jacob & Co unite to transcend boundaries never believed possible - an astounding luxury design and architectural feat the world has never seen before.

DESIGN CONCEPT

# The Impossible



BINGHATTI | JACOB&CO



01.

About  
The Project







ABOUT THE PROJECT

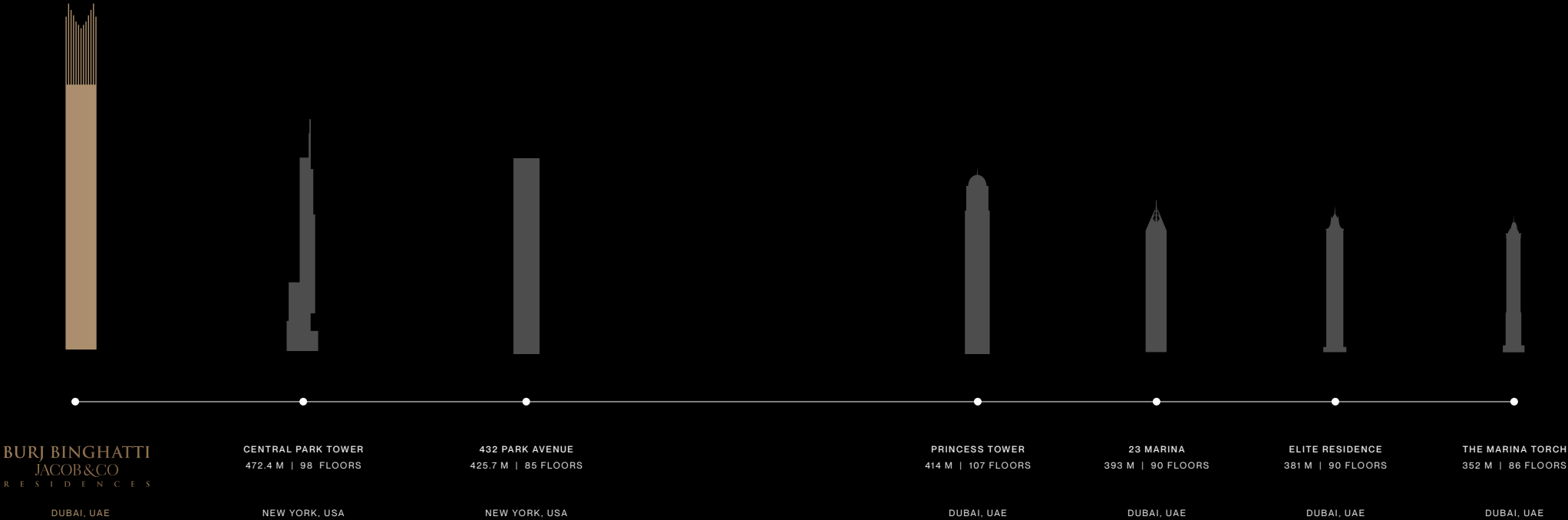
# The Map





ABOUT THE PROJECT

# An Iconic Skyscraper Sets to Break a World Record



Drawings are not to scale and building height is subject to government and local authority approvals.

ACCESSIBILITY

# Strategically Situated in Business Bay







ACCESSIBILITY

# Business Bay Marina Yacht Club

indulgence in grand  
metropolitan exuberant living

BURJ BINGHATTI  
JACOB & CO  
RESIDENCES





ABOUT THE PROJECT

# Project Facts

Property Type

Residential Skyscraper

Unit Type

Exclusive Villas

Sapphire Villa (2.5 Bedroom)

Emerald Villa (2 Bedroom)

Ruby Villa (3 Bedroom)

Sky Mansions

Diamond Sky Mansion (4 Bedroom)

Fleurs de Jardin Sky Mansion (6 Bedroom)

Sky Penthouses

Astronomia Sky Penthouse

The Billionaire Sky Penthouse



ABOUT THE PROJECT

# Stating Features



CONCIERGE  
SERVICE



CHAUFFEUR  
SERVICE



BODYGUARD  
SERVICE



BUTLER  
SERVICE



TITANIUM  
ACCESS CARD



PARKING  
ACCESS CARD



LOBBY  
LOUNGE



PRIVATE  
CHEF SERVICE



INFINITY  
POOL



FOOD &  
BEVERAGE



SPA  
SERVICE



DAYCARE  
SERVICE



HOUSEKEEPING /  
CLEANING SERVICE



GYMNASIUM &  
TRAINING SERVICES

\*Some of the above features are à la carte services.

All stated services whether in relation to the building, common areas or individual units are subject to government and local authority approvals.



02.

Design  
Details







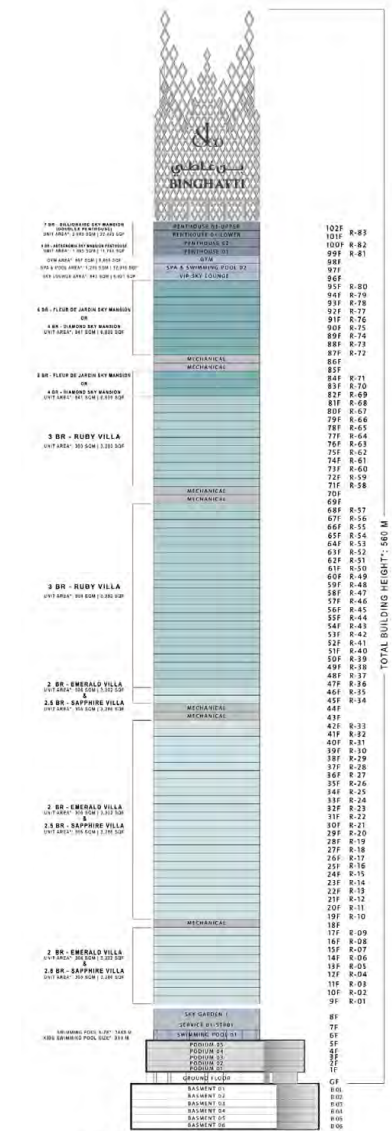
DESIGN DETAILS

Exclusively Fashioned  
for the Elite

BURJ BINGHATTI  
JACOB & CO  
RESIDENCES

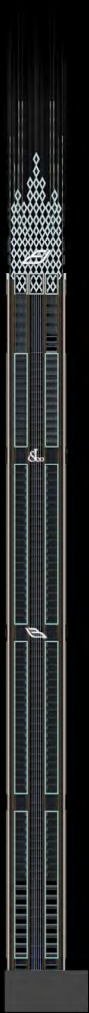






(\*) : INFO MIGHT SLIGHTLY VARY DURING FINALIZING THE ENGINEERING STAGE

DESIGN DETAILS



REAR ELEVATION



RIGHT ELEVATION



FRONT ELEVATION



LEFT ELEVATION

BURJ BINGHATTI  
JACOB & CO  
RESIDENCES

Drawings are not to scale and building height is subject to government and local authority approvals and we reserve the right to make any revisions whatsoever including for aesthetic purposes.



DESIGN DETAILS

## The Relentless Quest for Greatness



BURJ BINGHATTI  
JACOB & CO  
RESIDENCES



DESIGN DETAILS

# Unmatched Architectural Prowess





DESIGN DETAILS

## THE FACADE

BURJ BINGHATTI  
JACOB & CO  
RESIDENCES





DESIGN DETAILS  
THE LOBBY

BURJ BINGHATTI  
JACOB & CO  
RESIDENCES





INSPIRED BY THE CRAFTSMANSHIP OF

# Emerald

Exclusive two-bedroom residences on a quarter floor.

The Emerald Villa is an exquisite collection of two luxuriant bedroom units, each offering a unique perspective on the stunning cityscape of Dubai. Nestled within this premium collection, you'll find two-unit types, each boasting its own breathtaking views. The first unit type treats you to the awe-inspiring sight of downtown Dubai and the iconic Burj Khalifa, while the second type provides a panoramic vista of the mesmerizing Dubai skyline and the waters of the Creek Harbor. With spacious interiors and luxurious amenities, Emerald Villa offers an unparalleled living experience in the heart of one of the world's most vibrant cities.

MINIMUM PRICE

AED 8,200,000

AVERAGE PRICE

AED 9,964,000

MAXIMUM PRICE

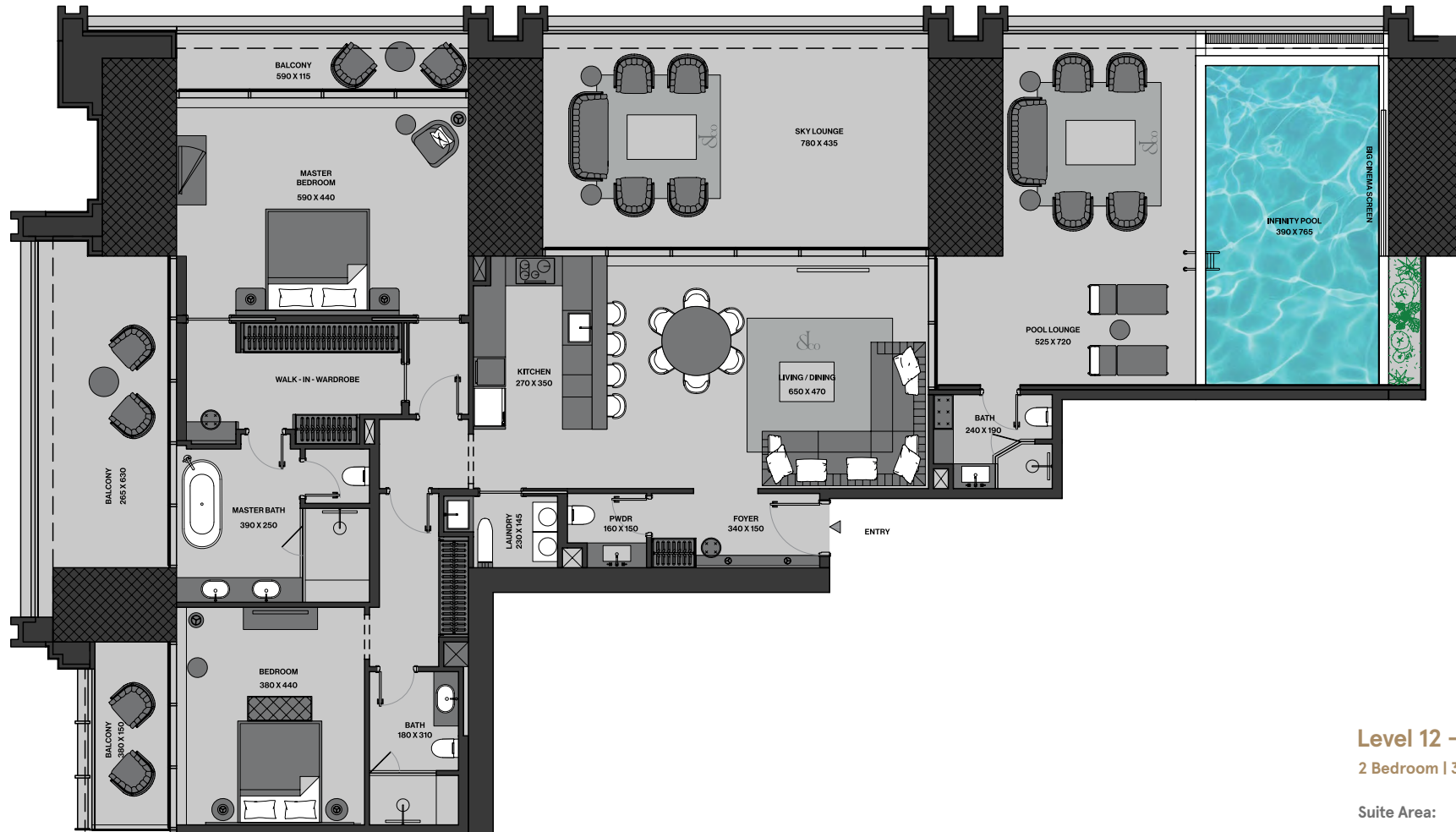
AED 11,920,000





# Emerald Villa

BURJ BINGHATTI  
JACOB & CO  
RESIDENCES



## Level 12 - 48

2 Bedroom | 3 Bathroom | Infinity Pool

Suite Area: 1,738 (SQ.FT)  
Terrace & Pool Area: 1,599 (SQ.FT)

Total Area: 3,337 (SQ.FT)  
Parking No: 2

Disclaimer: 1. All stated dimensions and services whether in relation to the building, common areas or individual units are subject to government and local authority approvals. Final dimensions and services will be stated in your sales and purchase agreement. 2. All room dimensions are measured to structural elements and exclude wall finishes and construction tolerances. 3. All dimensions have been provided by our consultant architects. 4. All materials, dimensions and drawings are approximate. Information is subject to change without notice. 5. Actual suite area may vary from the stated area. Drawings are not to scale. The Developer reserves the right to make any revisions whatsoever including for aesthetic purposes. 6. Calculation of suite area is measured as the area bounded by the centre line of demarcation or partition walls separating one unit from another unit, the exterior face of all exterior walls, and the exterior face of the corridor wall enclosing the adjoining unit. 7. Calculation of balcony area is measured as the area bounded by the centre line of demarcation or partition walls separating one unit from another unit, the exterior face of the enclosing guard and the external face of the adjoining balcony. 8. The units are measured at typical floor in the building. Columns may vary in size depending on the floor level. 9. For each unit type, unit sizes and details might be different and your sales and purchase agreement will contain the actual size of each specific unit.

DESIGN DETAILS

## EMERALD VILLA

BURJ BINGHATTI  
JACOB & CO  
RESIDENCES





DESIGN DETAILS

## EMERALD VILLA



BURJ BINGHATTI  
JACOB & CO  
RESIDENCES





DESIGN DETAILS

## EMERALD VILLA

BURJ BINGHATTI  
JACOB & CO  
RESIDENCES





INSPIRED BY THE CRAFTSMANSHIP OF

# Sapphire

High-end dual bedroom suites on a quarter floor  
(with exclusive study and storage room)

The Sapphire Villa is an exceptional collection of two-bedroom luxury units that have been thoughtfully designed to meet every need. With spacious interiors that include a study/maid room and an additional storage area, the Sapphire Wing offers a truly premium living experience.

Within this exclusive collection, you'll find two-unit types, each offering a unique perspective on the magnificent cityscape of Dubai. The first unit type boasts a stunning side view of downtown Dubai and the iconic Burj Khalifa, while the second type treats you to the Creek Harbor and the Dubai Design District.

MINIMUM PRICE

AED 8,400,000

AVERAGE PRICE

AED 9,679,000

MAXIMUM PRICE

AED 10,980,000





Suite Area:	1,732 (SQ.FT)
Terrace & Pool Area:	1,602 (SQ.FT)
<hr/>	
Total Area:	3,335 (SQ.FT)
Parking No:	2

[illegible]



DESIGN DETAILS

## SAPPHIRE VILLA

BURJ BINGHATTI  
JACOB & CO  
RESIDENCES

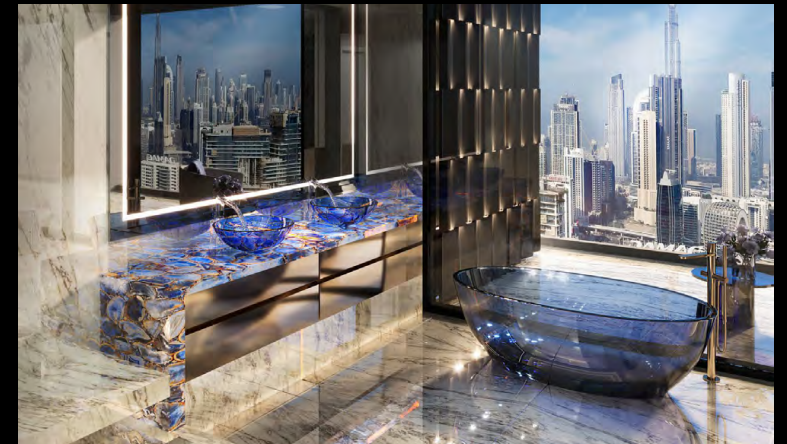




DESIGN DETAILS

## SAPPHIRE VILLA

BURJ BINGHATTI  
JACOB & CO  
RESIDENCES





INSPIRED BY THE CRAFTSMANSHIP OF

# Ruby

Deluxe quarter-floor three-bedroom residences.

The Ruby Villa is a truly exceptional collection of three-bedroom luxury units that offer an unrivaled living experience in the heart of Dubai. With spacious interiors and premium amenities, the Ruby Villa is designed to meet the needs of the most discerning individuals.

This exclusive collection comprises four unique unit types, each offering its own breathtaking views of the stunning cityscape. The first unit type provides a mesmerizing view of downtown Dubai and the iconic Burj Khalifa, while the second unit type offers panoramic vistas of the serene waters of the Creek Harbor and the vibrant Dubai Design District.

For those seeking a more varied perspective, the Ruby Villa also offers two additional unit types. The third unit type treats you to a stunning side view of downtown Dubai and the iconic Burj Khalifa, while the fourth unit type provides a perfect blend of the serene Creek Harbor and the vibrant Dubai Design District.

MINIMUM PRICE

AED 13,999,999

AVERAGE PRICE

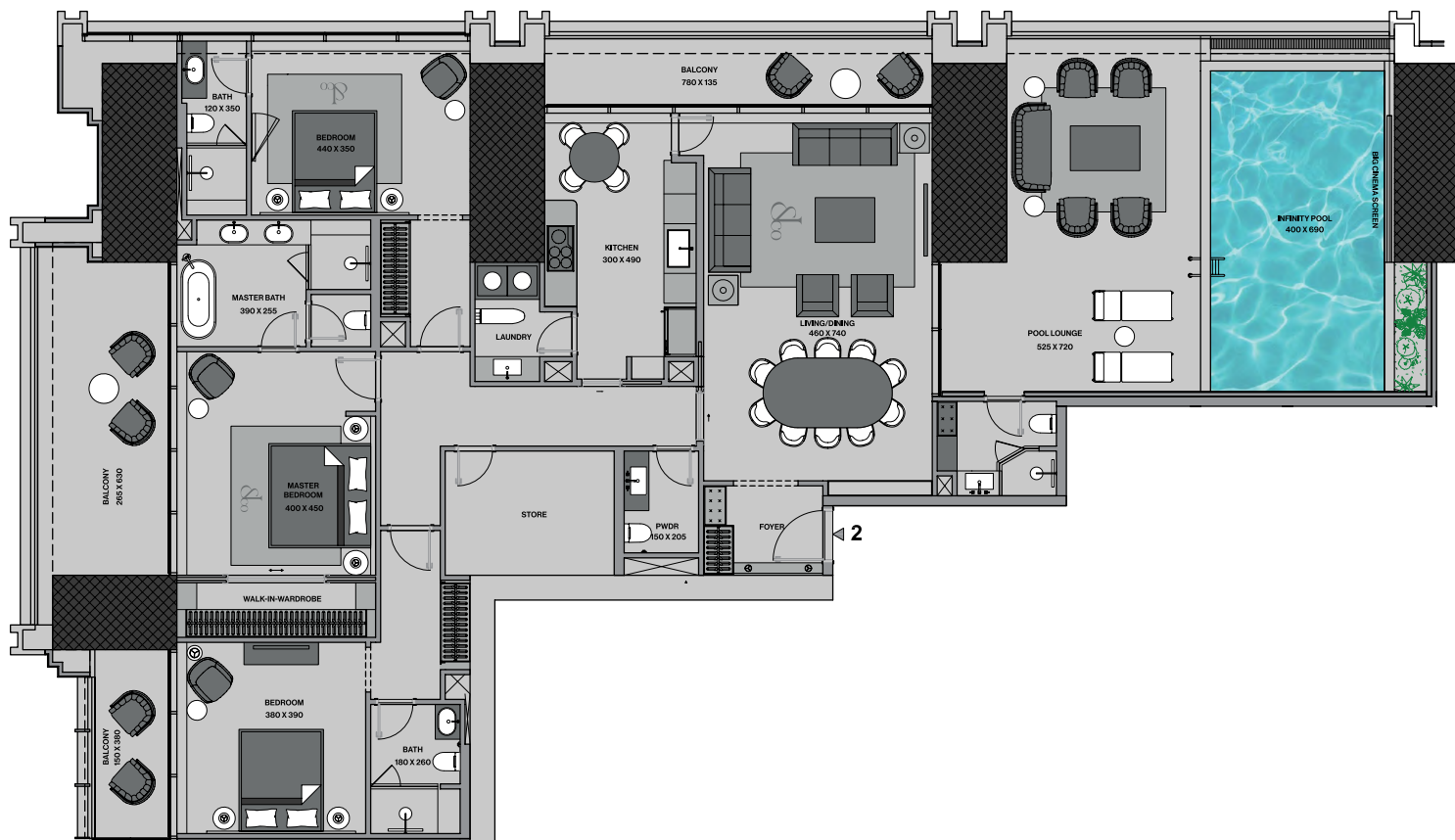
AED 15,494,999

MAXIMUM PRICE

AED 17,239,999







## Level 49 - 82

3 Bedroom | 4 Bathroom | Infinity Pool

Suite Area:	2,090 (SQ.FT)
Terrace & Pool Area:	1,209 (SQ.FT)

**Total Area:** 3,299 (SQ.FT)  
**Parking No:** 2

[illegible]



DESIGN DETAILS  
RUBY VILLA

BURJ BINGHATTI  
JACOB & CO  
RESIDENCES





DESIGN DETAILS  
RUBY VILLA

BURJ BINGHATTI  
JACOB & CO  
RESIDENCES





DESIGN DETAILS  
RUBY VILLA

BURJ BINGHATTI  
JACOB & CO  
RESIDENCES





INSPIRED BY THE CRAFTSMANSHIP OF

# Caviar Tourbillon Diamond

Sky Mansion on half floor with 4 luxury bedrooms.

The Diamond Sky Mansion – a high-end residence named after the illustrious Diamond Wing watch by Jacob and Co. This opulent mansion offers a truly luxurious living experience in the heart of Dubai.

Boasting four spacious and exquisite bedrooms, the Diamond Sky Mansion occupies a full half-floor space spanning from levels 83 to 96, offering breathtaking 180-degree panoramic views of the city from every angle.

There are two types of sky mansions in this collection, each designed to cater to varied preferences. The first type treats you to an awe-inspiring view of the world-famous Burj Khalifa, while the second type offers a panoramic vista of the waters of the Creek Harbor and the vibrant Dubai skyline.

Luxurious amenities and exquisite attention to detail are the hallmarks of the Diamond Sky Mansion, making it the ultimate choice for those who demand the exceptional. From the finest materials and finishes, every aspect of this fascinating residence has been meticulously crafted to exceed your expectations.

MINIMUM PRICE

AED 8,200,000

AVERAGE PRICE

AED 9,964,000

MAXIMUM PRICE

AED 11,920,000





4 Bedroom | 7 Bathroom | Infinity Pool

**Terrace & Pool Area:** 1,800 (SQ.FT)

Parking No: 4

[illegible]



DESIGN DETAILS

## DIAMOND SKY MANSION

BURJ BINGHATTI  
JACOB & CO  
RESIDENCES





DESIGN DETAILS

## DIAMOND SKY MANSION

BURJ BINGHATTI  
JACOB & CO  
RESIDENCES





INSPIRED BY THE CRAFTSMANSHIP OF

# Fleurs de Jardin

Sky Mansion on half floor with 6 luxury bedrooms.

The Fleurs de Jardin Sky Mansion - an exceptional residence named after the iconic Fleur de Jardin watch by Jacob and Co. This magnificent mansion offers a truly luxurious living experience in the heart of Dubai.

Boasting six spacious and opulent bedrooms, the Fleurs de Jardin Sky Mansion occupies a full half-floor space spanning from levels 83 - 96, offering breathtaking 180-degree panoramic views of the city from every angle.

Within this premium collection, there are two types of sky mansions, each designed to cater to your unique preferences. The first type treats you to an awe-inspiring view of the world-famous Burj Khalifa, while the second type offers a panoramic vista of the waters of the Creek Harbor and the vibrant Dubai skyline.

Luxurious amenities and exquisite attention to detail are the hallmarks of the Fleur de Jardin Sky Mansion, making it the ultimate choice for those who demand the very best. From the finest materials and finishes, every aspect of this magnificent residence has been meticulously crafted to exceed your expectations.

MINIMUM PRICE

AED 31,000,000

AVERAGE PRICE

AED 33,716,667

MAXIMUM PRICE

AED 36,100,000





6 Bedroom | 9 Bathroom | Infinity Pool

**Total Area:** 6,976 (SQ.FT)  
**Parking No:** 4



DESIGN DETAILS

FLEURS DE JARDIN  
SKY MANSION

BURJ BINGHATTI  
JACOB & CO  
RESIDENCES





DESIGN DETAILS

# FLEURS DE JARDIN SKY MANSION

BURJ BINGHATTI  
JACOB & CO  
RESIDENCES





DESIGN DETAILS

# FLEURS DE JARDIN SKY MANSION

BURJ BINGHATTI  
JACOB & CO  
RESIDENCES





INSPIRED BY THE CRAFTSMANSHIP OF

# Astronomia

An elite Sky Penthouse with five bedrooms on a private floor.

The Astronomia Sky Penthouse - an exclusive set of full-floor Sky Penthouse that offer an unparalleled living experience in Dubai. Named after the iconic and prestigious Astronomia watch by Jacob and Co., this collection boasts the finest in luxury living, with spacious and opulent interiors and breathtaking 360-degree views of the city.

Each Sky Penthouse in the Astronomia Collection features five luxurious bedrooms, ample living space, and the finest finishes and amenities. But it's the view that truly sets these residences apart, with a stunning panoramic vista of the entire cityscape. From the world-famous Burj Khalifa to the bustling downtown area, the serene waters of the Creek Harbour, and the vibrant Dubai Water Canal and Dubai Design District, you'll be able to take in the entire city from the comfort of your own home.

The Astronomia Sky Penthouse is the ultimate choice for those seeking the pinnacle of luxury living in Dubai. With its unrivaled location, opulent amenities, and breathtaking views, this exclusive collection offers an unparalleled living experience that is sure to take your breath away. Come and experience the finest that life has to offer in one of the most iconic and prestigious residences in the world.

PRICE

AED 175,000,000



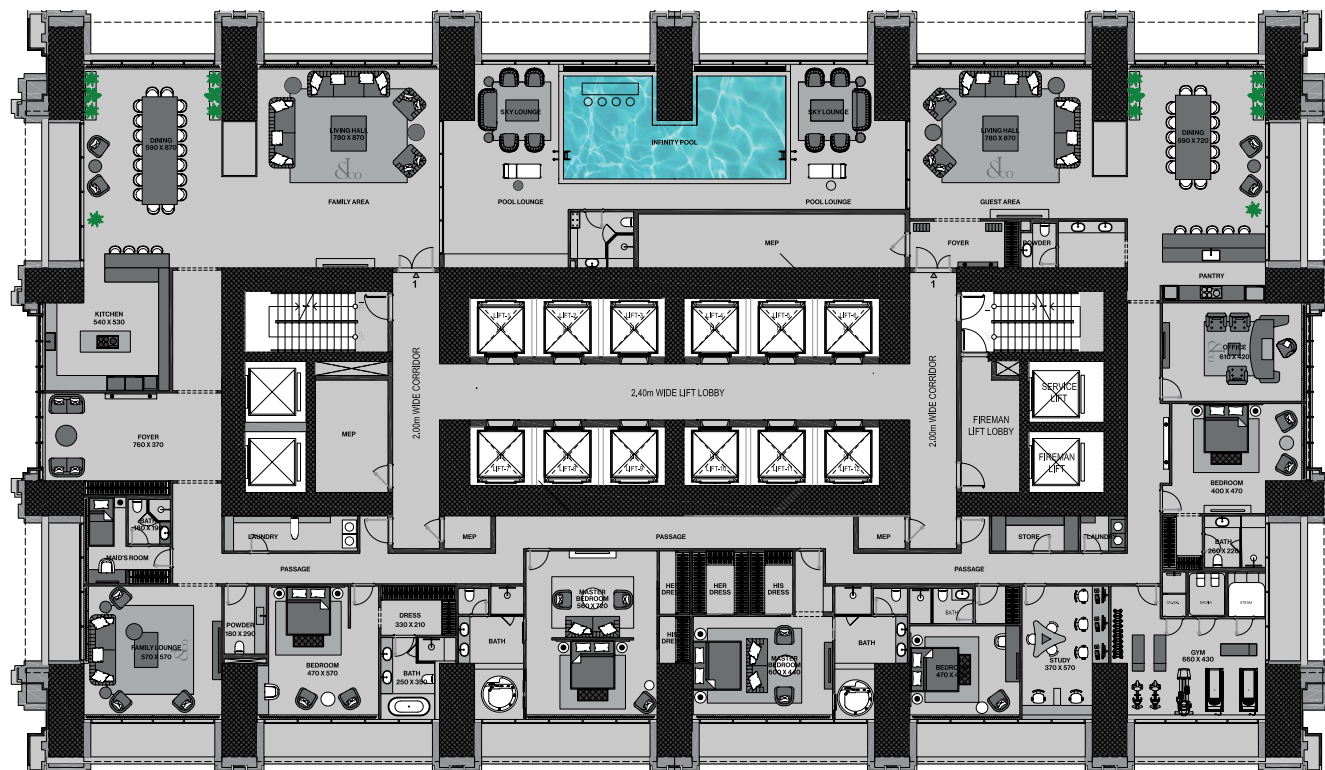


Suite Area: 10,290 (SQ.FT)

**Terrace & Pool Area:** 1,517 (SQ.FT)

**Total Area:** 11,807 (SQ.FT)

Parking No: 6

[illegible]



DESIGN DETAILS

# ASTRONOMIA SKY PENTHOUSE

BURJ BINGHATTI  
JACOB & CO  
RESIDENCES





DESIGN DETAILS

# ASTRONOMIA SKY PENTHOUSE

BURJ BINGHATTI  
JACOB & CO  
RESIDENCES





DESIGN DETAILS

# ASTRONOMIA SKY MANSION PENTHOUSE

BURJ BINGHATTI  
JACOB & CO  
RESIDENCES





INSPIRED BY THE CRAFTSMANSHIP OF

# Billionaire

An elite Sky Penthouse with 7 Bedrooms on two private full floors at the top of the tallest Residential Tower in the world.

The Billionaire Sky Penthouse - a truly one-of-a-kind residence that embodies luxury and opulence at every turn. This magnificent mansion is named after the iconic Billionaire watch by Jacob and Co. and is the epitome of exclusivity and sophistication.

Located at the top two floors of The Burj Binghatti Jacob and Co. Tower, the Billionaire Sky Penthouse boasts seven spacious and luxurious bedrooms, along with ample living space that is designed to cater to your every need. From the finest materials to the most unique lifestyle and design elements, the Billionaire Sky Mansion is the ultimate expression of luxury living.

Not only does The Billionaire Sky Penthouse offer the finest amenities and luxurious living space, it also boasts an unparalleled 360-degree view of the magnificent city of Dubai. From the iconic Burj Khalifa to the bustling downtown area, the vibrant Business Bay, and the tranquil waters of the Creek Harbor, the panoramic view from the Billionaire Sky Mansion Penthouse is simply breathtaking.

In addition to these iconic landmarks, you'll also enjoy a stunning view of the serene waters of the Dubai Water Canal and the vibrant Dubai Design District, all framed by the glittering skyline of Dubai. The Billionaire Sky Penthouse offers an unparalleled living experience, where every moment is one of pure luxury and indulgence.

PRICE

AED 750,000,000

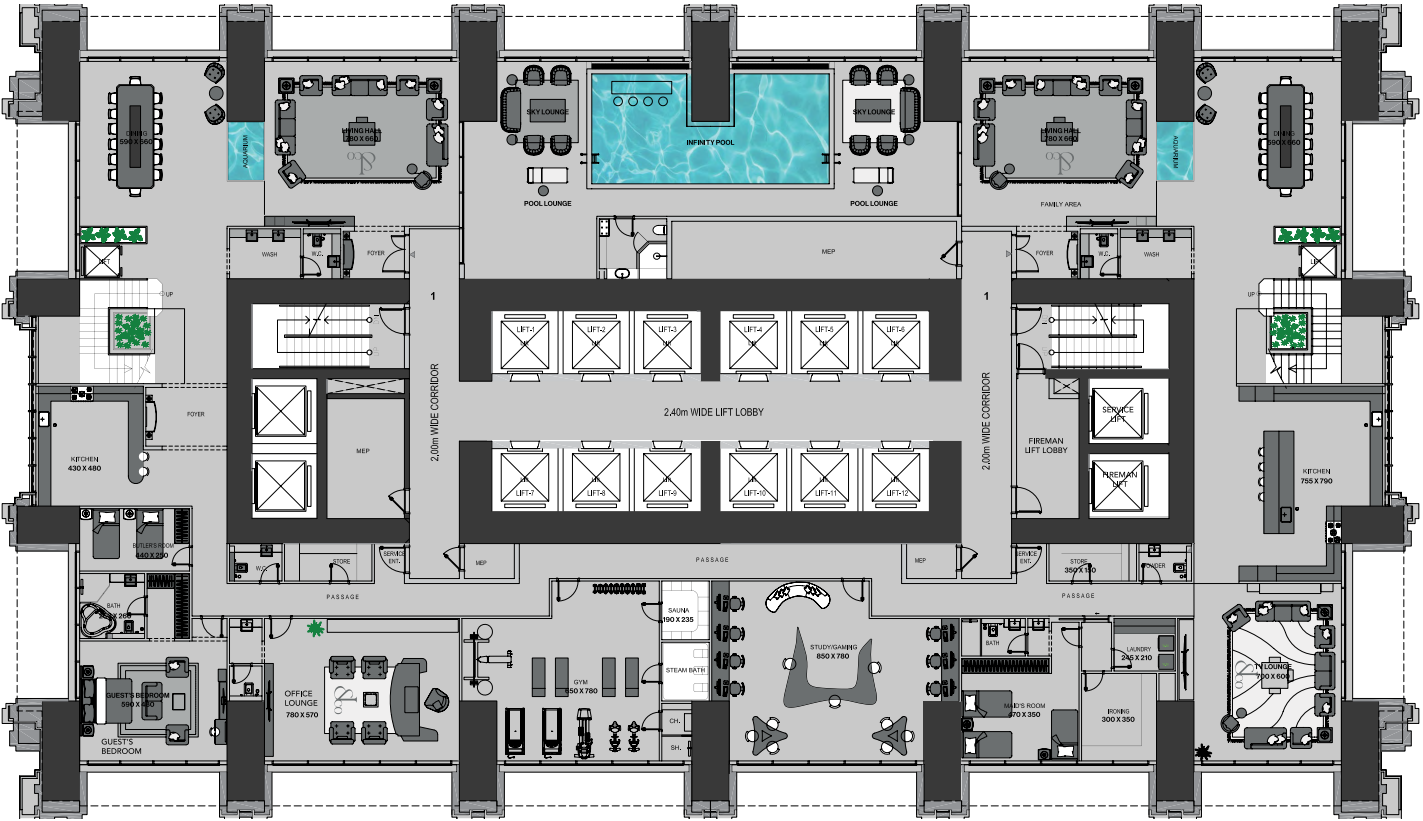




# The Billionaire Sky Penthouse

Lower Level

BURJ BINGHATTI  
JACOB & CO  
RESIDENCES



## Level 102 & 103

7 Bedroom | 10 Bathroom | Infinity Pool

Suite Area: 20,788 (SQ.FT)  
Balcony Area: 1,681 (SQ.FT)

Total Area: 22,469 (SQ.FT)  
Parking No: 12

Disclaimer: 1. All stated dimensions and services are in relation to the building, common areas or individual units are subject to government and local authority approvals. Final dimensions and services will be stated in your sales and purchase agreement. 2. All room dimensions are measured to structural elements and exclude wall finishes and construction tolerances. 3. All dimensions have been provided by our consultant architects. 4. All materials, dimensions and drawings are approximate. Information is subject to change without notice. 5. Actual suite area may vary from the stated area. Drawings are not to scale. The Developer reserves the right to make any revisions whatsoever including for aesthetic purposes. 6. Calculation of suite area is measured as the area bounded by the centre line of damper or partition walls separating one unit from another unit, the exterior face of all exterior walls, and the exterior face of the corridor wall enclosing the adjoining unit. 7. Calculation of balcony area is measured as the area bounded by the centre line of damper or partition walls separating one unit from another unit, the external face of the enclosing guard and the external face of the adjoining balcony. 8. The units are measured at typical floor in the building. Columns may vary in size depending on the floor level. 9. For each unit type, unit sizes and details might be different and your sales and purchase agreement will contain the actual size of each specific unit.

التوضيح: 1. أبعاد الغرف والمناطق العامة والخدمة والأجزاء والمرافق المذكورة في المخططات هي لأغراض التصميم فقط. الأبعاد النهائية والخدمة النهائية ستعلن في عقد البيع والشراء. 2. جميع الأبعاد هي لأغراض التصميم فقط. الأبعاد النهائية والخدمة النهائية ستعلن في عقد البيع والشراء. 3. جميع الأبعاد هي لأغراض التصميم فقط. الأبعاد النهائية والخدمة النهائية ستعلن في عقد البيع والشراء. 4. جميع الأبعاد هي لأغراض التصميم فقط. الأبعاد النهائية والخدمة النهائية ستعلن في عقد البيع والشراء. 5. جميع الأبعاد هي لأغراض التصميم فقط. الأبعاد النهائية والخدمة النهائية ستعلن في عقد البيع والشراء. 6. جميع الأبعاد هي لأغراض التصميم فقط. الأبعاد النهائية والخدمة النهائية ستعلن في عقد البيع والشراء. 7. جميع الأبعاد هي لأغراض التصميم فقط. الأبعاد النهائية والخدمة النهائية ستعلن في عقد البيع والشراء. 8. جميع الأبعاد هي لأغراض التصميم فقط. الأبعاد النهائية والخدمة النهائية ستعلن في عقد البيع والشراء. 9. جميع الأبعاد هي لأغراض التصميم فقط. الأبعاد النهائية والخدمة النهائية ستعلن في عقد البيع والشراء.



Suite Area:	20,788 (SQ.FT)
Balcony Area:	1,681 (SQ.FT)
<hr/>	
Total Area:	22,469 (SQ.FT)
Parking No:	12

[illegible]



DESIGN DETAILS

# Illuminating Unrivalled Affluence

BURJ BINGHATTI  
JACOB & CO  
RESIDENCES



FINISHES

# Conclusive Dexterity

BURJ BINGHATTI  
JACOB & CO  
RESIDENCES



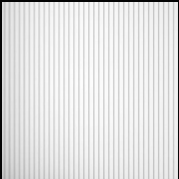
Velvet Fabric  
Dusky Blue



Velvet Fabric  
Royal Blue



Velvet Fabric  
Sapphire Blue



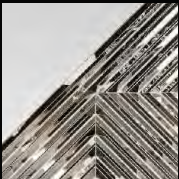
White Fluted  
Wood Panel



White Scalloped  
Flute Wood Panel



Tinted Brown Glass



Mirror Glass



Tinted Violet Glass

Leather Black  
Snake Skin Texture

All finishes are subject to change without notice at our sole discretion for any reason including for aesthetic purposes.



FINISHES

BURJ BINGHATTI  
JACOB & CO  
RESIDENCES



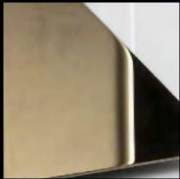
Nero Marquina  
Black Marble



Black River  
Marble



Asian St. Laurent  
Marble



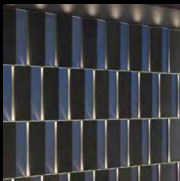
Brass Metal Glossy



Glossy Black Panel



Calacatta Borghini  
Porcelain Slab-Polished



Stainless Matte  
Black Panel



Calacatta Borghini  
Marble



Brushed Stainless  
Steel Ripple Finish



All finishes are subject to change without notice at our sole discretion for any reason including for aesthetic purposes.



DESIGN DETAILS

## Stratospheric Infinity Pool

ravish in boundless sybaritic spree



BURJ BINGHATTI  
JACOB & CO  
RESIDENCES





DESIGN DETAILS

Bask in  
Uttermost  
Grandeur

BURJ BINGHATTI  
JACOB & CO  
RESIDENCES





The Zenith of  
Artistry and Opulence





Inspired by  
the Impossible

BURJ BINGHATTI  
JACOB & CO  
RESIDENCES





Architectural Concept Design:  
Muhammad Binghatti

Lifestyle Concept and Interior Design:  
Jacob Arabo

Architectural Details and Interior Design:  
Roman Vnoukov  
*exclusively for Jacob & Co*



BINGHATTI | JACOB&CO