



SAFATWO

de GRISOGONO  
GENEVE

**DAMAC**

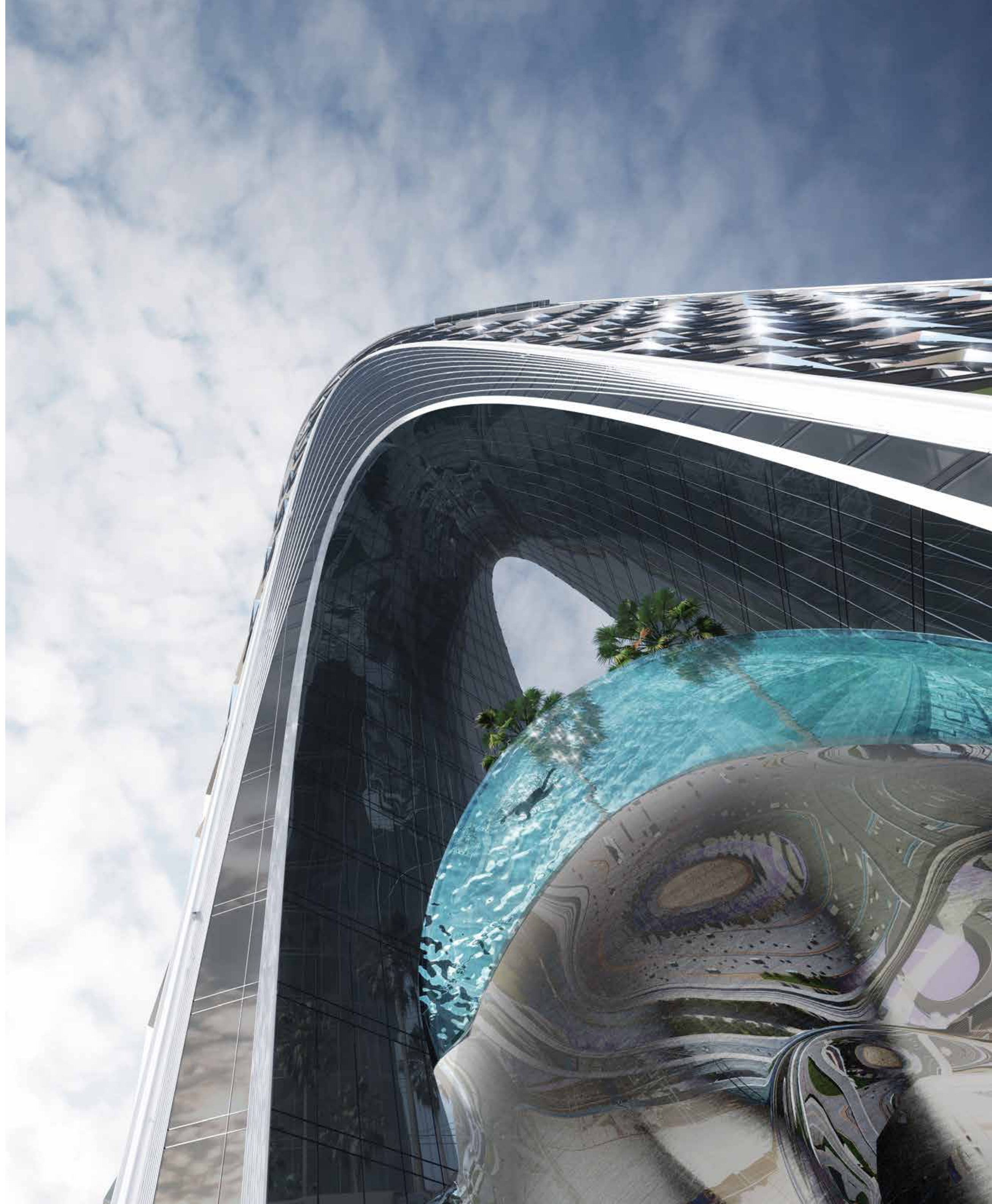




T H E F U T U R E O F L U X U R Y



A S E Q U E L  
S O  
S T U N N I N G ,  
I T ' S  
O U T O F  
T H I S  
W O R L D .









I M A G I N E   B E I N G  
F A C E   T O   F A C E   W I T H  
A   D R E A M   C O M E   T R U E .

A   P L A C E   T H A T   G O E S  
B E Y O N D   A N Y T H I N G  
Y O U ' V E   E V E R   K N O W N .







T H E   S P A R K L E  
O F   P O S S I B I L I T Y .

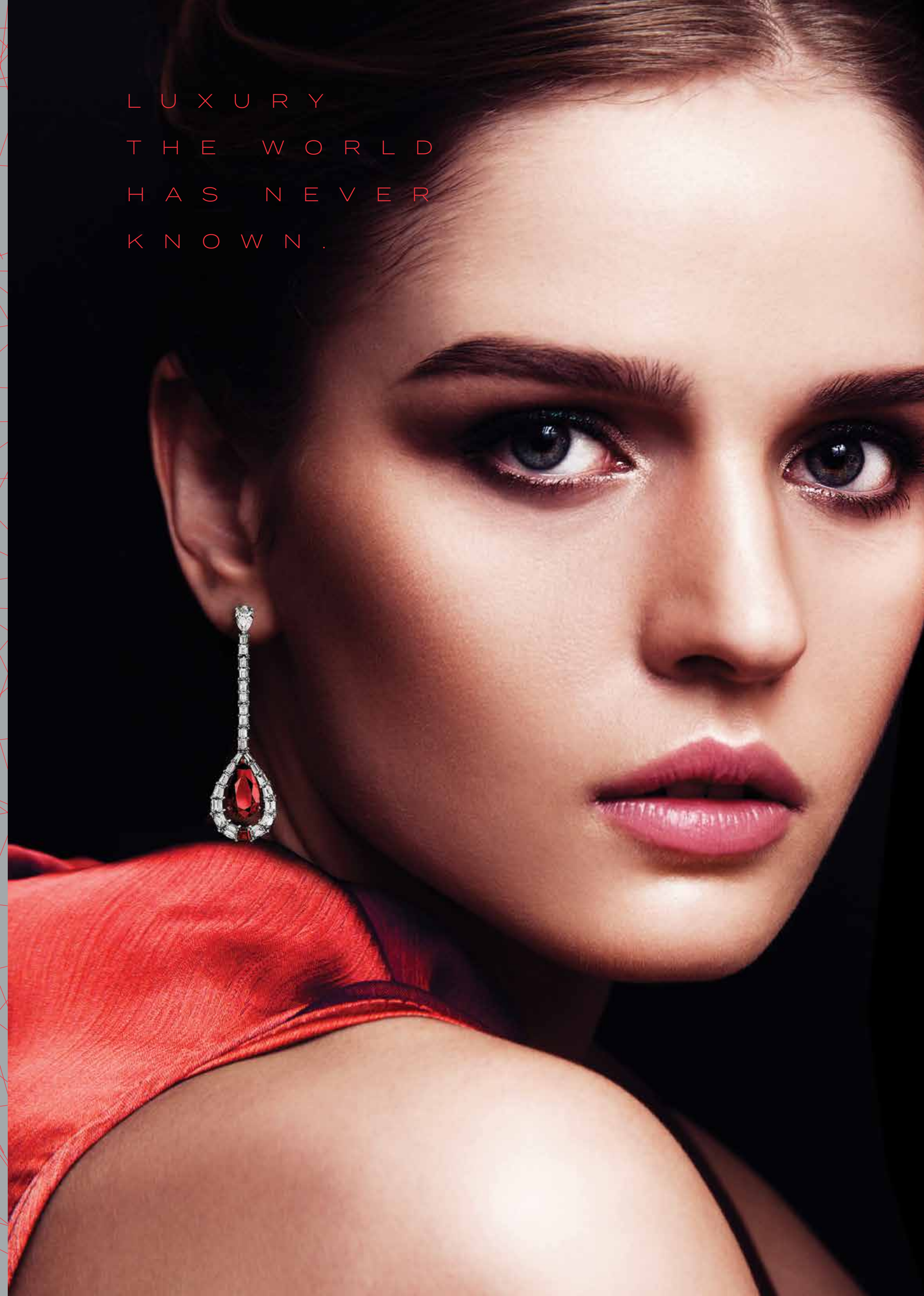


T H E   F I N E   L I N E S  
O F   T H E   F U T U R E .  
T H E   D E S I G N   O F  
T H I N G S   T O   C O M E .



UNEXPECTED  
UNFORGETTABLE  
UNIMAGINABLE

LUXURY  
THE WORLD  
HAS NEVER  
KNOWN.





T O D A Y

A N D H E R E ,  
W H E R E T O D A Y  
A N D T O M O R R O W  
M E E T , I S W H E R E  
Y O U C O M E I N .

T O M O R R O W



S E T   Y O U R   E Y E S  
O N   T H E   F U T U R E  
A N D   R A C E   I N T O  
T H E   P O S S I B I L I T I E S .

S T E P   I N T O   T H E  
L U X U R Y   O F   T H E  
U N K N O W N   A N D  
A C C E P T   A N  
I N V I T A T I O N   I N T O  
T H E   I M P O S S I B L E .





WELCOME HOME  
TO THE **FUTURE**.  
WELCOME TO

SAFATWO













S A F A T W O I S  
E X C L U S I V E L Y  
B R A N D E D B Y  
D E G R I S O G O N O  
O F S W I T Z E R L A N D



de GRISOGONO  
GENEVE



INSPIRED BY THE DE GRISOGONO  
SIGNATURE RUBIES AND THE COLOUR  
OF CHANGE, EXCITEMENT AND LIFE  
ITSELF, THE TOWER SHOWCASES  
STUNNING SCARLET SHADES  
RIGHT FROM THE MAGNIFICENT  
LOBBY ENTRANCE TO THE INTERIOR  
DETAILING AND FURNITURE.





# STEP INTO THE LIGHT

INSPIRED BY THE SUN,  
THE DAZZLING SPLENDOR  
THAT IS SAFA TWO IS SET  
TO BECOME THE MOST  
PROMINENT LANDMARK ON  
THE CITY'S GOLDEN MILE.  
ITS UNIQUE DESIGN, MEANT  
TO EMULATE A CUT DIAMOND,  
IS INSTANTLY RECOGNIZABLE  
FROM MILES AWAY.



# GATEWAY TO THE CITY

SAFA TWO SITS ACROSS THE ROAD FROM SAFA ONE, AND TOGETHER, THE TWO DEVELOPMENTS ARE POISED TO FORM AN ELEGANT ARCHWAY, MARKING THE PASSAGE BETWEEN CENTRAL DUBAI AND ITS NEWER AREAS. THE FORMER HAS BEEN INTENTIONALLY DESIGNED TO OFFER RESIDENTS STUNNING VIEWS ALL AROUND, INCLUDING THOSE OF THE CANAL, BURJ AL ARAB, THE WORLD ISLANDS AND THE PALM JUMEIRAH.







# S O A K U P T H E S U N

UNEXPECTED AND EXCEPTIONAL, THE AMENITIES ARE OBVIOUSLY, SECOND TO NONE. DESIGNED TO STAND OUT, THE PODIUM LEVEL ARTIFICIAL BEACH POOL TRANSPORTS YOU TO THE SANDS OF NAVAGIO OR LA CONCHA, GIVING YOU EVERY EXCUSE TO BASK IN THE SHADE OF NATURAL PALM TREES AS YOU TAKE IN THE MAGNIFICENT DUBAI SKYLINE.















THE  
RUBY  
HEART







HIGH ABOVE THE PODIUM  
ON THE 60<sup>TH</sup> FLOOR SITS  
ONE OF SAFA TWO'S UNIQUE  
FEATURES AND POSSIBLY  
ITS MOST RECOGNIZABLE  
ONE - THE APPROPRIATELY  
NAMED 'RUBY HEART'.









APART FROM BEING AN ARCHITECTURAL  
MARVEL, THE HEART ALSO HOSTS  
SEVERAL OPULENT AMENITIES SUCH AS  
A ONE-OF-A-KIND SAPPHIRE INFINITY  
POOL OVERLOOKING SHEIKH ZAYED  
ROAD AND HIGH-END RESTAURANTS.









# YOUR UNIQUE ADDRESS

ABOVE THE RUBY HEART ARE THE  
SUPER LUXURY FLOORS OF SAFA TWO,  
WHICH ARE IN TURN CROWNED BY  
THE 85<sup>TH</sup> FLOOR, RESPLENDENT WITH  
A HOST OF AVANT-GARDE AMENITIES  
DESIGNED TO TAKE YOUR BREATH AWAY.

FOG FOREST

OBSERVATORY

EDGE WALK

GLASS SLIDE

SELECTION OF CAFES  
& RESTAURANTS



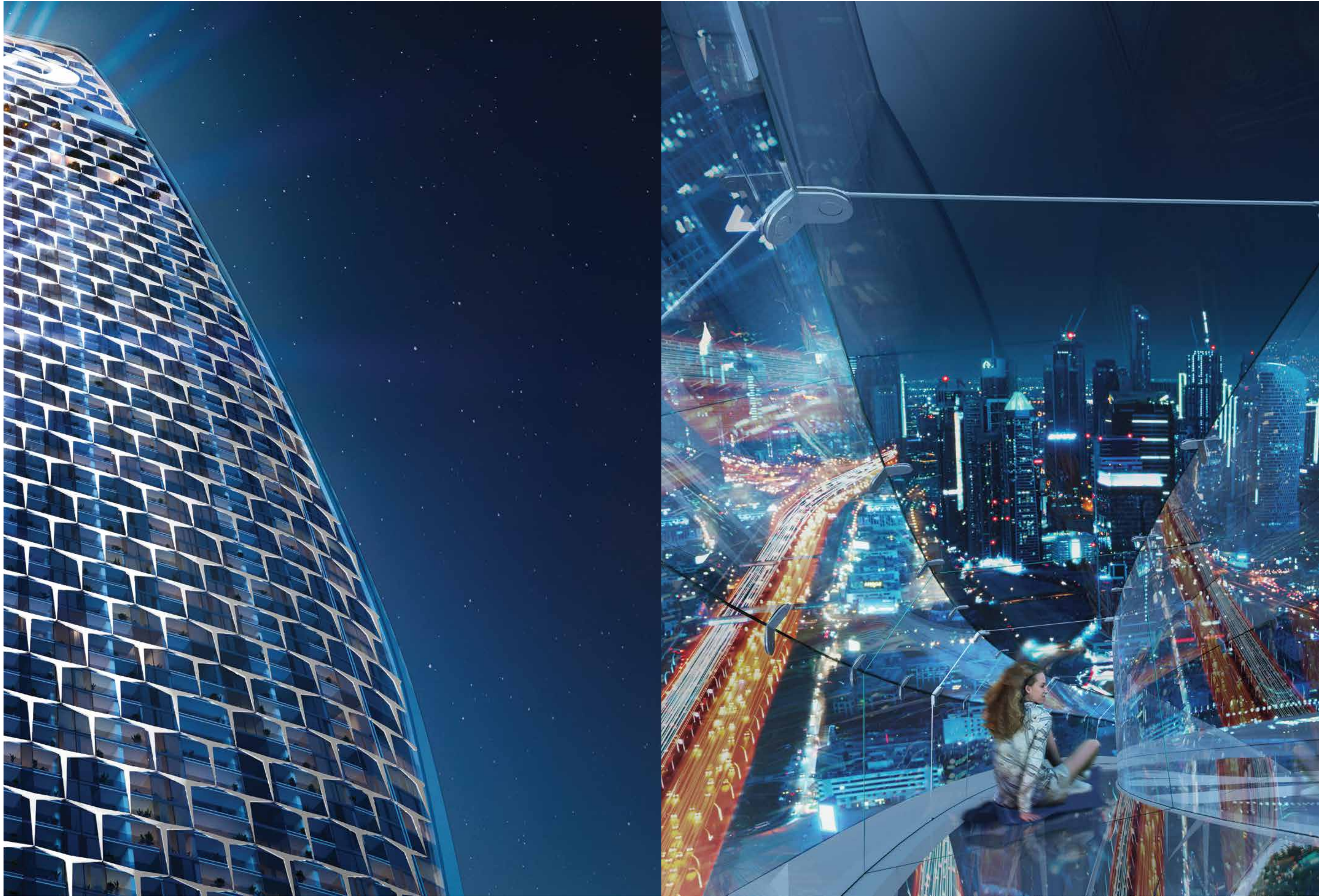


# WALK ABOVE THE CLOUDS

THE SAFA TWO EDGE WALK EXPERIENCE PROVIDES A GENEROUS DOSE OF ADRENALINE FOR THRILL-SEEKERS AS THEY WALK ON THE EDGE OF THE ABYSS, LOOKING DOWN AT THE CLOUDS. NOT TO BE OUTDONE, THE SPIRALLING GLASS SLIDE IS SET TO BE AN EXHILARATING RIDE THAT COMES WITH A TRULY SPECTACULAR VIEW OF THE HEART OF DUBAI FOR THOSE DARING ENOUGH TO TRY IT.









O N T O P

O F T H E  
W O R L D

IMAGINE A ROOFTOP TROPICAL  
PARADISE PERPETUALLY SHROUDED IN  
MIST. NOT ONLY IS THIS DUBAI'S FIRST  
AND ONLY FOG FOREST, IT'S ALSO THE  
HIGHEST ONE IN THE WORLD.





LET CALM WASH OVER AS  
YOU STROLL THROUGH THIS  
ETHEREAL GARDEN OR DINE  
AT THE RESTAURANT. FOR A  
CHANGE OF VIEW, VISIT THE  
HIGHEST ACCESSIBLE POINT  
IN THE BUILDING AT THE SAFA  
TWO OBSERVATORY AND TAKE  
IN THE MESMERISING VIEWS  
OF THE CITY AROUND YOU  
AND THE FOREST BELOW.



# H O M E S O F T H E F U T U R E





TRANSFORMATIVE



LIVING SPACES



EACH LUXURY APARTMENT MAKES USE OF IMPECCABLE TRANSFORMATIVE LIVING SPACES, USING MOVABLE WALLS TO GIVE YOU COMPLETE FLEXIBILITY OVER YOUR HOME. CHANGE THE LAYOUT WHENEVER YOU WANT - IT'S AS SIMPLE AS OPENING A DOOR OR A WINDOW.

















# DAMAC PROPERTIES

## LIVE THE LUXURY

DAMAC Properties has been at the forefront of the Middle East’s luxury real estate market since 2002, delivering award-winning residential, commercial and leisure properties across the region and around the world, including the UAE, Saudi Arabia, Qatar, Jordan, Lebanon, Iraq, Maldives, Canada, United States and United Kingdom. Since then, the company has delivered approximately 47,000 homes, with a development portfolio of more than 33,000 at various stages of planning and progress.\*

Joining forces with some of the world’s most eminent fashion and lifestyle brands, DAMAC has brought new and exciting living concepts to the market with collaborations that include a golf course managed by The Trump Organization, and luxury homes in association with Versace, de GRISOGONO, Cavalli, Just Cavalli, Paramount Hotels & Resorts, Rotana and the Radisson Hotel Group. With a consistent vision and strong momentum, DAMAC Properties is building the next generation of Middle Eastern luxury living.

DAMAC places a great emphasis on philanthropy and corporate social responsibility. The Hussain Sajwani – DAMAC Foundation (HSDF), a joint initiative between DAMAC Group and Hussain Sajwani, announced the launch of the ‘Fresh Slate’ initiative in collaboration with the Dubai Police General Headquarters, aimed at aiding detainees in Dubai’s Punitive and Correctional Institutions who have been charged with petty offences.

The HSDF also pledged AED 5 million for the 1 Billion Meals initiative launched by Vice President and Prime Minister of the UAE, and Ruler of Dubai, His Highness Sheikh Mohammed bin Rashid Al Maktoum, at the start of Ramadan 2022, aimed at providing meals to underprivileged communities in 50 countries across the world.

DAMAC has also supported the vision of Sheikh Mohammed to train one million Arab coders in creating an empowered society through learning and skills development, an initiative that successfully wrapped up in May 2022.

\*As of 31th December 2023.

# LUXURY BY APPOINTMENT

CONTACT US AT ANY OF OUR OFFICES OR VISIT [DAMACPROPERTIES.COM](https://damacproperties.com)

### UNITED ARAB EMIRATES

Dubai  
Tel: 800-DAMAC (800-32622)  
E-mail: [dubai@damacgroup.com](mailto:dubai@damacgroup.com)

Park Towers – Sales Centre  
Dubai International Financial Centre

AYKON City – Sales Centre  
Floor 63, Sheikh Zayed Road

DAMAC Hills – Sales Centre  
Golf Veduta, Townhouse TH2

DAMAC Hills – Sales Centre  
Bellavista (Carson Building)

DAMAC Hills 2 – Sales Centre  
Amazonia Cluster, Villa 333

DAMAC Hills 2 – Sales Centre  
Water Town

### QATAR

Building 90, New Solta Area  
Ali bin Abi Talib Street  
Next to Omar bin Al Khattab  
Health Centre  
Tel: +974 44 666 986  
Fax: +974 44 554 576  
E-mail: [doha@damacgroup.com](mailto:doha@damacgroup.com)

### KINGDOM OF SAUDI ARABIA

DAMAC Towers Riyadh  
South Tower  
Olaya District  
King Fahd Road  
PO Box 102460  
Tel: +966 11 835 0300  
E-mail: [ksa@damacgroup.com](mailto:ksa@damacgroup.com)

### TURKEY

Levazım, Mah. Koru Sk.  
Zorlu Centre No. 2  
IC Kapi No. 347, Beşiktaş/Istanbul  
Turkey  
Tel: +90 212 892 0327  
Fax: +90 212 890 7184  
E-mail: [turkey.office@damacgroup.com](mailto:turkey.office@damacgroup.com)

### LEBANON

Unit 1801, 18th Floor  
DAMAC Tower  
Omar Daouk Street  
Mina El Hosn, Beirut Central District  
Tel: +961 81 647 200  
E-mail: [beirut@damacgroup.com](mailto:beirut@damacgroup.com)

### UNITED KINGDOM

DAMAC Tower  
63-71 Bondway London SW8 1SQ  
Tel: +44 (0) 207 590 8050  
[damactower.co.uk](https://damactower.co.uk)

### CHINA

Beijing DAMAC Office Address  
East Tower  
No.1 East Middle 3rd Road  
Beijing 100020  
4th Floor  
Unit 03

Shanghai DAMAC Office Address  
3 Corporate Avenue  
168 Hubin Road, Huangpu District  
Shanghai 25F  
25th Floor  
Units 2510-2511

### SINGAPORE

Asia Square Tower 1  
Marina View, Marina Bay  
Singapore 018960  
11th Floor  
Unit 11-06



***DAMAC***